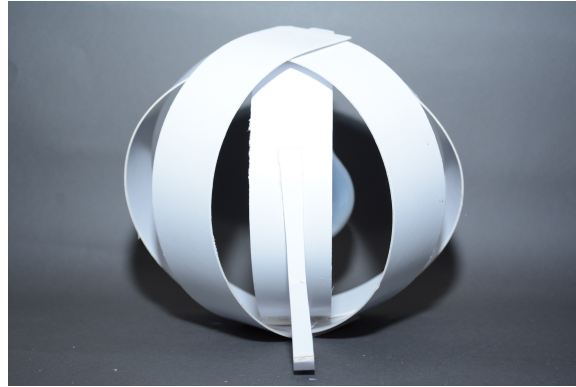
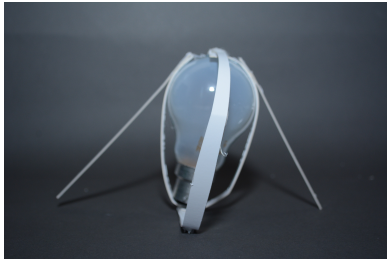
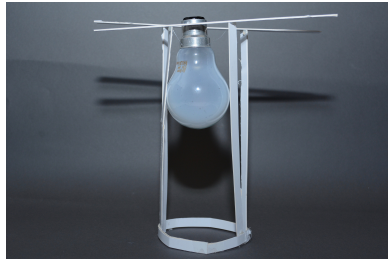
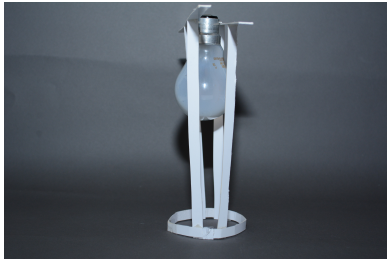


# **PLANAR & LINEAR MODELS**





**These models all turned out quite successful in the fact that they meet the brief but also they were all quite random and unique. However I used hot glue in most models therefore making for some ugly feature (Blobs of glue).**

**Overall I have exceptionally happy with my refined planar design as it was one of my cleanest and most successful models.**

**Upon seeing other models from the class I see that I can improve in a few ways and big one would be time management.**

